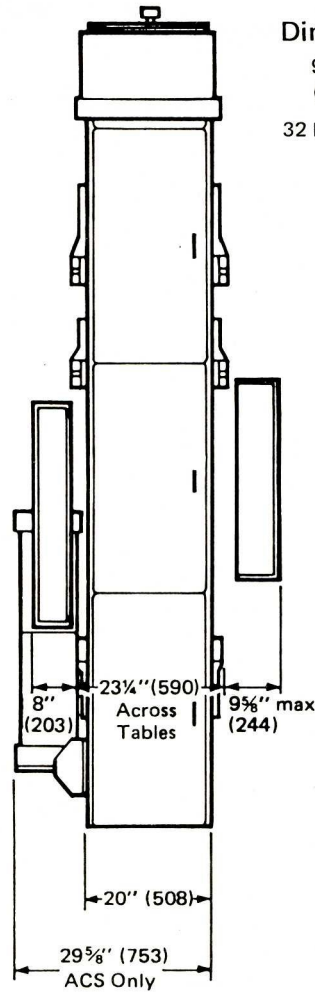
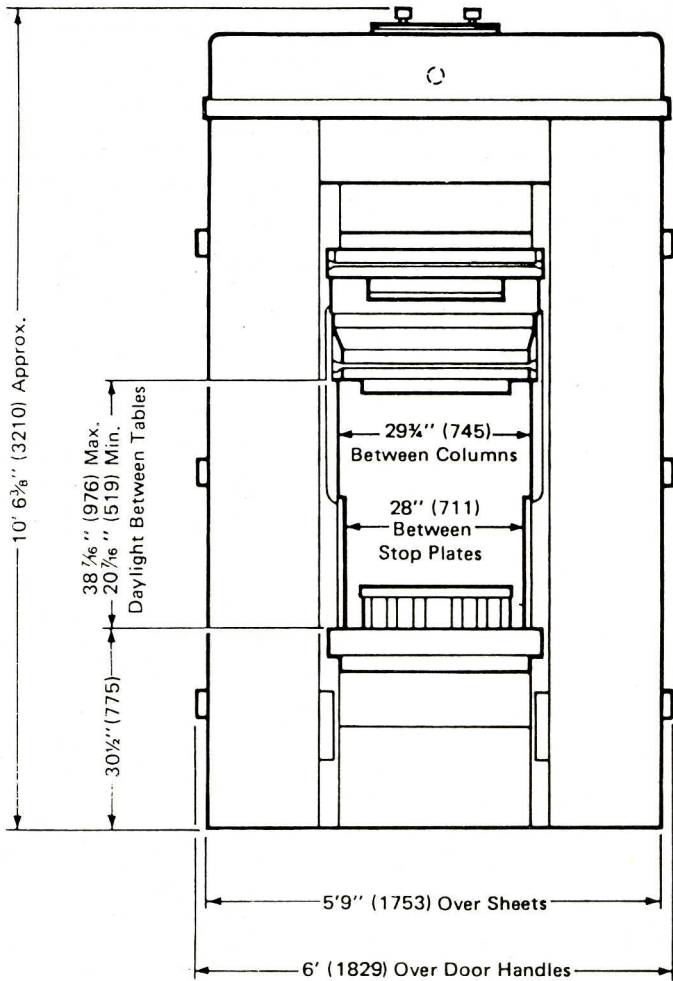


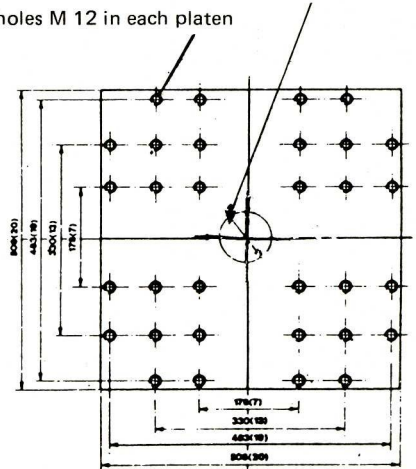
150 ton Compression Press



Dimension induction heated platens

95 dia. (3%) hole in bottom platen only
(If transfer is fitted)

32 holes M 12 in each platen



Dimensions in millimetres
(equivalents in inches in bracket)

Max table size left to right between stop plates
Max table size front to back
*Standard heated platen size (12 kVA per pair)
Daylight between tables
Daylight between heated platens (using stool bars)
Main ram stroke
Hydraulic Circuit Pressure
Max. pressing force (Main ram pressure intensified to 3000 psi)
Main ram pull back force at circuit pressure
Transfer ram force
Transfer ram stroke
Maximum pummel diameter
Approximate weight of maximum shot (Based on 12g/in³)
Ejection force (top and bottom)
Ejector return force
Ejector stroke top
Ejector stroke bottom
Total kVA self contained press.
Weight of press. nett semi-auto self contained

28 in	711 mm
23 1/4 in	590 mm
20 in x 20 in	508 mm x 508 mm
38 7/8 in	976 mm
23.4 in	593 mm
18 in	457 mm
1000 psi	68.97 Bars
150 ton	152.4 t
4.8 ton	4.9 t
26.9 ton	27.3 t
6 in	152 mm
2.25 in	57 mm
10 oz	283 g
3.5 ton	3.6 t
2 ton	2.0 t
4 in	101 mm
8 in	203 mm
39.0	39.0
6.26 ton	6858 Kg.

*24" platens can be fitted subject to suitable modifications to heat control circuits and ejectors.

Information in this publication is to the best of our knowledge true and accurate but, because we are constantly seeking to improve our products, we reserve the right to change specifications at any time. This statement does not affect the statutory rights of a consumer.

Please note our change of address

Unit 4 Middlemore Lane West
Aldridge
Walsall WS9 8BG
Telephone: 01922 451245
Fax: 01922 743040
Email: sales@jrdbipel.com

Metric units are a direct conversion of nominal imperial values.

